



# 5240

## FEATURES AND BENEFITS



### 426 HP DYNAMIC 5240 GRINDER





## SAFETY STOPS

LOCATED ON BOTH SIDES OF MACHINE



## LOCKABLE ACCESS DOORS





## SAFETY ACCESS STEPS



## HAMMER MILL SAFETY PIN





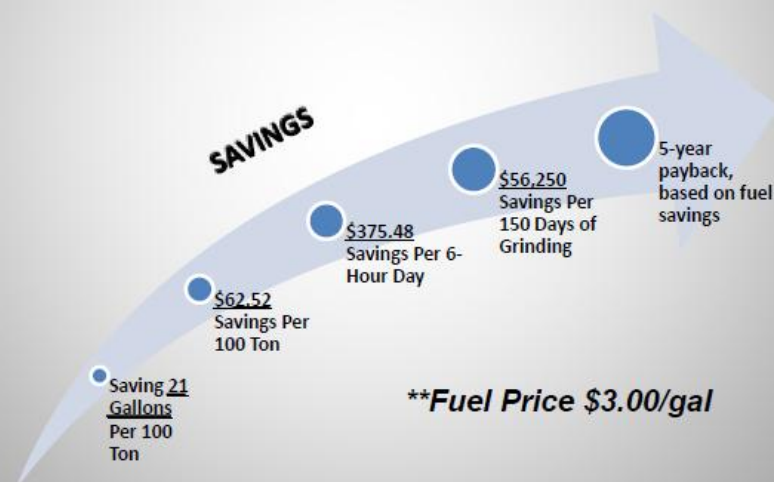


## 426 HP FUEL MIZER VOLVO ENGINE



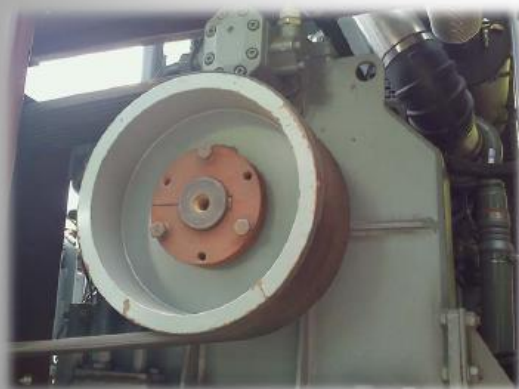
## EARLY CUSTOMER FEEDBACK

- “The Dynamic Grinder is Burning 21 Gallons of fuel less per 100 ton of production than my Morbark does. That adds up.”  
*BJ Anderson, TX*





## K-19 TRANSFLUID CLUTCH W/ PULLEY



## OIL COOLERS





## PLUS +1 SYSTEM MANAGEMENT



## HAMMERMILL RPM SENSOR







## IGNITION PANEL



## HYDRAULIC PANEL





## HYDRAULIC / FUEL TANKS

110 GAL HYDRAULIC / 130 GAL FUEL TANK



## HAMMERMILL







## SCREEN REPLACEMENT

RAISE INFEED ROLLER AND INSTALL SAFETY  
PIN



REMOVE 3 HOLD DOWN BOLTS  
SLIDE GRATES UP AND OUT/ REINSTALL NEW



## SCREEN HOLD DOWN PLATE





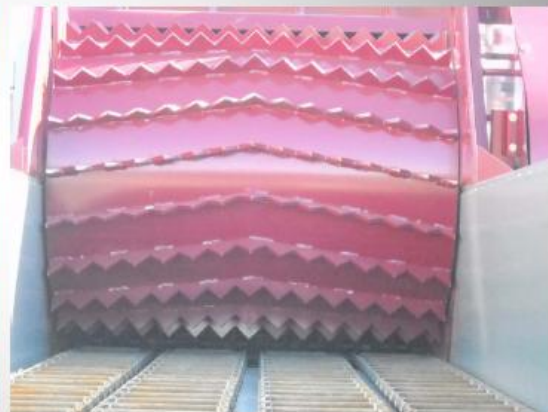
## SCREENS

AR 400 STEEL



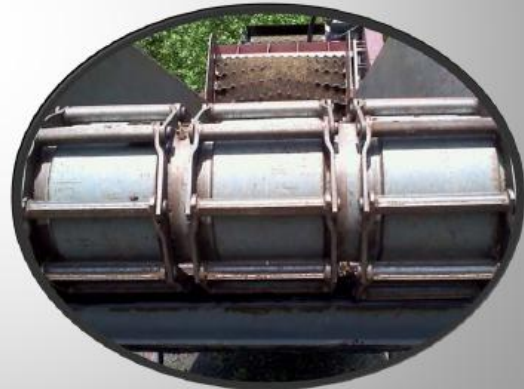
## INFEED DRIVE ROLLER

44 " DIAMETER





## INFEEED HOPPER OPTIONS



## INFEEED ALIGNMENT ADJUSTMENT







## BELLY PAN BELT TO DISCHARGE CONVEYER



## BELLY PAN BELT ALIGNMENT ADJUSTER





## MAGNETIC HEAD PULLEY



## OUTFEED CONVEYOR

24 FT. / 15 FT. DISCHARGE HEIGHT

FOLDED UP FOR TRANSPORT





## Dynamic 5240 Horizontal Grinder Competitive Analysis

	Dynamic 5240	Peterson 2700	Rotochopper M-266	Morbark 3800
HP	426	475	475	440
Production	180 yds/hr	200 yds/hr	200 yds/hr	180 yds/hr
Fuel Efficiency	8-14 gal/hr	25 gal/hr	25 gal/hr	22 gal/hr
Price				
Change of Grates	30 Min	3-4 hours	2 hours	2-3 hours



27



## MOBILITY

102" WIDTH

5<sup>TH</sup> WHEEL PIN TO CONNECT TO TRACTOR







## APPLICATIONS

- BIO –MASS
- MULCH
- RECYCLING
- C & D
- LANDCLEARING
- COMPOSTING
- ASPHALT SHINGLES
- ETC.



## DYNAMIC GRINDERS

- DYNAMIC 5240: CURRENT PRODUCTION
  - 426 HP VOLVO ENGINE
  - 10 -14 GALS PER HOUR
  - 200 + YARDS PRODUCTION PER HOUR
- DYNAMIC 5240 T (TRACK)
- DYNAMIC 6490 T (768 HP)

